

NEW  
GREEN  
TECHNOLOGY!



# SolarSmart™! A Greener & Smarter Way To Automate Your Roller Shutters!



## The NEW SolarSmart™ Roller Shutter Automation System:



- Completely solar powered.
- Green energy & environmentally friendly.
- Save money on energy costs.
- No drilling or 240V hard wiring.
- Easy & quick to install.
- No need for electricians.
- Remote control operated.
- Choice of profile colours.
- 5 Year Guarantee on motor.
- Designed in Australia.

**SolarSmart™**  
Roller Shutter Automation

  
**CW PRODUCTS**  
HOME AUTOMATION & ROLLER SHUTTERS

## What Is SolarSmart™?

**SolarSmart™** has been developed by CW Products (Australia's leading supplier of roller shutters and home automation products), and is the most advanced technology in solar powered roller shutter automation in Australia.

**SolarSmart™** is a roller shutter automation system independent of mains power, with no hard wiring. It harnesses the sun's energy through solar cells (ideally positioned on the roof facing north and in direct sunlight), which charges a concealed battery system that in turn powers a DC motor for automation. The **SolarSmart™** system utilises the latest in sophisticated electronics to manage the charging of the advanced battery system and is controlled via a specialised wireless remote control transmitter. This all means an easier, more cost effective, environmental and efficient way to operate roller shutters, not to mention it is a much easier way to install motorised roller shutters!

At CW Products we're committed to making life easier for all roller shutter users and protecting our precious Earth!



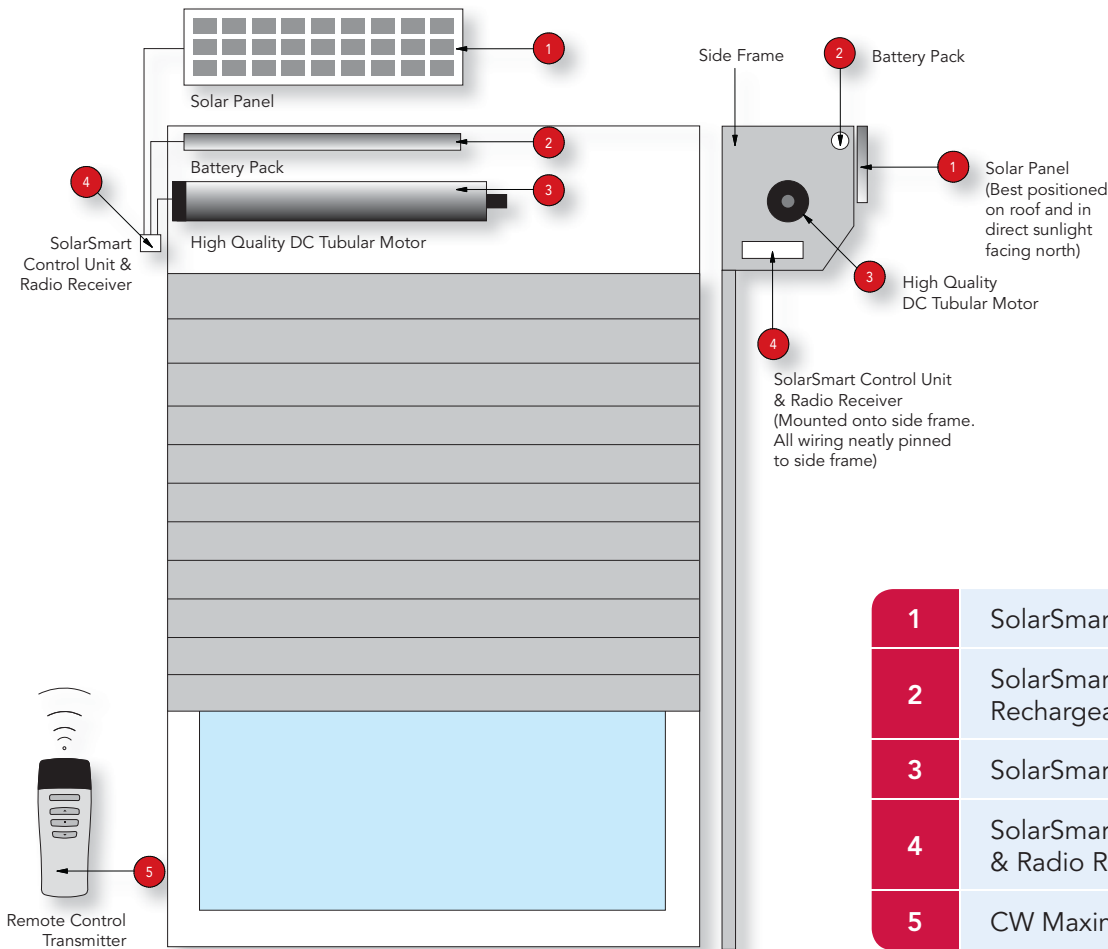
## The Benefits Of SolarSmart™!

As well as saving roller shutter users and installers time and money, **SolarSmart™** has many other benefits:

- Fast & easy to install.
- No drilling or hard wiring inside the home.
- Simple to wire & independent of mains power.
- No need for electricians.
- Solar & green powered.
- Completely integrated system with concealed battery in the shutter pelmet.
- Smooth electronic operation.
- Wireless remote control operation.
- 5 Year Guarantee on motor.
- 1 Year Guarantee on solar panel, battery & all electronics.



# The SolarSmart™ System At A Glance!



1	SolarSmart 60mA Solar Panel
2	SolarSmart 12V DC NiMH Rechargeable Battery Pack
3	SolarSmart 12V DC Tubular Motor
4	SolarSmart 12V Control Unit & Radio Receiver
5	CW Maxim Radio Transmitter

## Four Solar Panel Position Options

The **SolarSmart™** Solar Panels are a sleek aluminium framed amorphous type which have excellent power output even in cloudy conditions. They also have a better power output than most solar panels when affected by heat.

**SolarSmart™** Solar Panels are best positioned on the roof (facing north and in direct sunlight) for optimum performance. Solar panels are supplied with 2 brackets and all wires must be protected from UV radiation and the weather with all drill holes well sealed.

The **SolarSmart™** Battery Pack may require future maintenance and/or replacement. This should be considered in difficult to reach applications like on the second storey of a building.



Roof Mounted Solar Panel



Solar Panel to Pelmet\*



Solar Panel to Wall\*



Angled Solar Panel\*

\* Solar panels are only to be positioned on or above the roller shutter if in direct sunlight and facing north, with a minimum of half a day of sunlight in both Summer and Winter. Otherwise for optimum performance, solar panels should be positioned on the roof in direct sunlight and facing north where possible. If not enough direct sunlight, you may require two solar panels to power the roller shutter, or you may need to move the solar panels to a north facing or ideal position, with available extension cables.

## Two Remote Control Options

The SolarSmart™ system incorporates the stylish CW Maxim Radio Transmitter and is available in both 1 Channel and 6 Channel options. Both transmitters are powered by a 3 Volt Lithium button battery.



1 Channel Transmitter

6 Channel Transmitter

## Solar Panel Extension Cables

Extension cables are available in 3m, 5m and 10m lengths for solar panels positioned away from the roller shutter eg. Roof Mounted.



Extension Cable

## SolarSmart™ Technical Specifications

<b>Maximum Surface Area</b>	12m <sup>2</sup> roll formed profile
	7.5m <sup>2</sup> extruded profile
<b>Minimum Shutter Width</b>	500mm
<b>Maximum Shutter Weight</b>	50kg
<b>Maximum Axle Diameter</b>	Octagonal 70mm

<b>Solar Panel Size</b>	475mm x 75mm x 18mm
<b>Battery Size</b>	450mm x 28mm
<b>Power Supply</b>	12V
<b>Radio Remote Frequency</b>	433.4MHz
<b>Radio Remote Range</b>	200m in free field

For more information on the SolarSmart™ Roller Shutter Automation system, please contact your nearest dealer, installer or visit [www.cwproducts.com.au](http://www.cwproducts.com.au)!

Authorised Dealer:

Illustrations, photos and colours shown in this brochure are for illustrative purposes only. All technical specifications and dimensions are correct at time of printing and may change without notice. Profile technical specifications and shutter performance may vary in certain applications, eg. wide applications with no solid structure behind the roller shutter. For more information please contact your CW Products representative. SolarSmart and the SolarSmart logo are trademarks of CW Products. © 2013 CW Products.

Exclusively distributed in Australia by **CW Products**  
 13-23 Doecke Road Murray Bridge SA 5253  
**Tel:** +61 8 8341 0120 **Fax:** +61 8 8341 1750  
**Web:** [www.cwproducts.com.au](http://www.cwproducts.com.au)

